



LED Indicators

LED Beacon Lights

Series PHR

Series PHR

Technical features

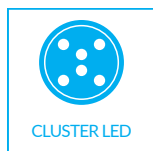
Body material: **Polycarbonate (PC) V0/UL 94**
 Body colour: **Black**
 Protection degree: **IP54**
 Working temperature: **-20°C +60°C**
 Operating life at AT 25°C: **> 100.000 h**
Not replaceable LEDs



Available with integrated Lamp Test circuit (LT), to test all signals at once.



Available with inbuilt diode (PD) to avoid reverse feeding and Tropicalization treatment.



Optional Blinking Light. Extra bright visibility even with sunlight thanks to the powerful Cluster LED.

Customs tariff: **85389091**

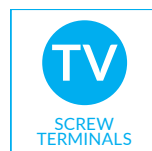
Supply voltage +/- 10%

Power	Consumption	Current
12 Vac/dc	15-20mA	AC/DC
24 Vac/dc	15-20mA	AC/DC
48 Vac/dc	15-20mA	AC/DC
130 = 110-130 Vac/dc	15-20mA	AC/DC
240 Vac	15mA	Alternating Current
220 Vdc	9mA	Direct Current

Other power supplies on request



Integrated Rectifier Bridge to work in Alternating Current (AC) or Direct Current (DC), automatically.



Easy to connect thanks to the Faston terminals 2.8mm x 0.8mm, Screw terminals or Flying Leads.

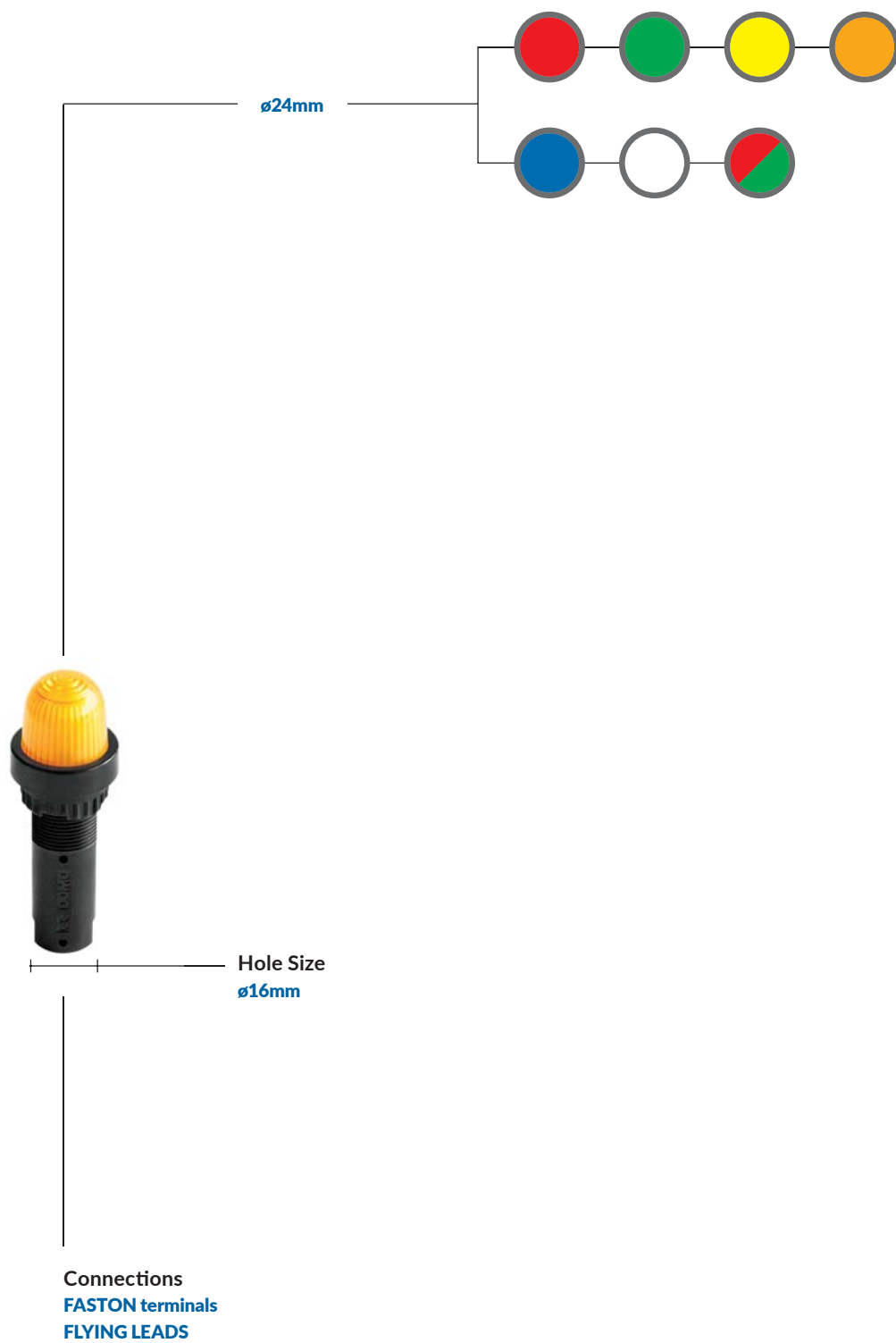
Compliance:

Directive 2006/95/EC Low Voltage
Directive 2004/108/EC Electromagnetic Compatibility
Directive 2011/65/EC RoHS
Directive 2006/42/EC Machinery

Conformity to standards:

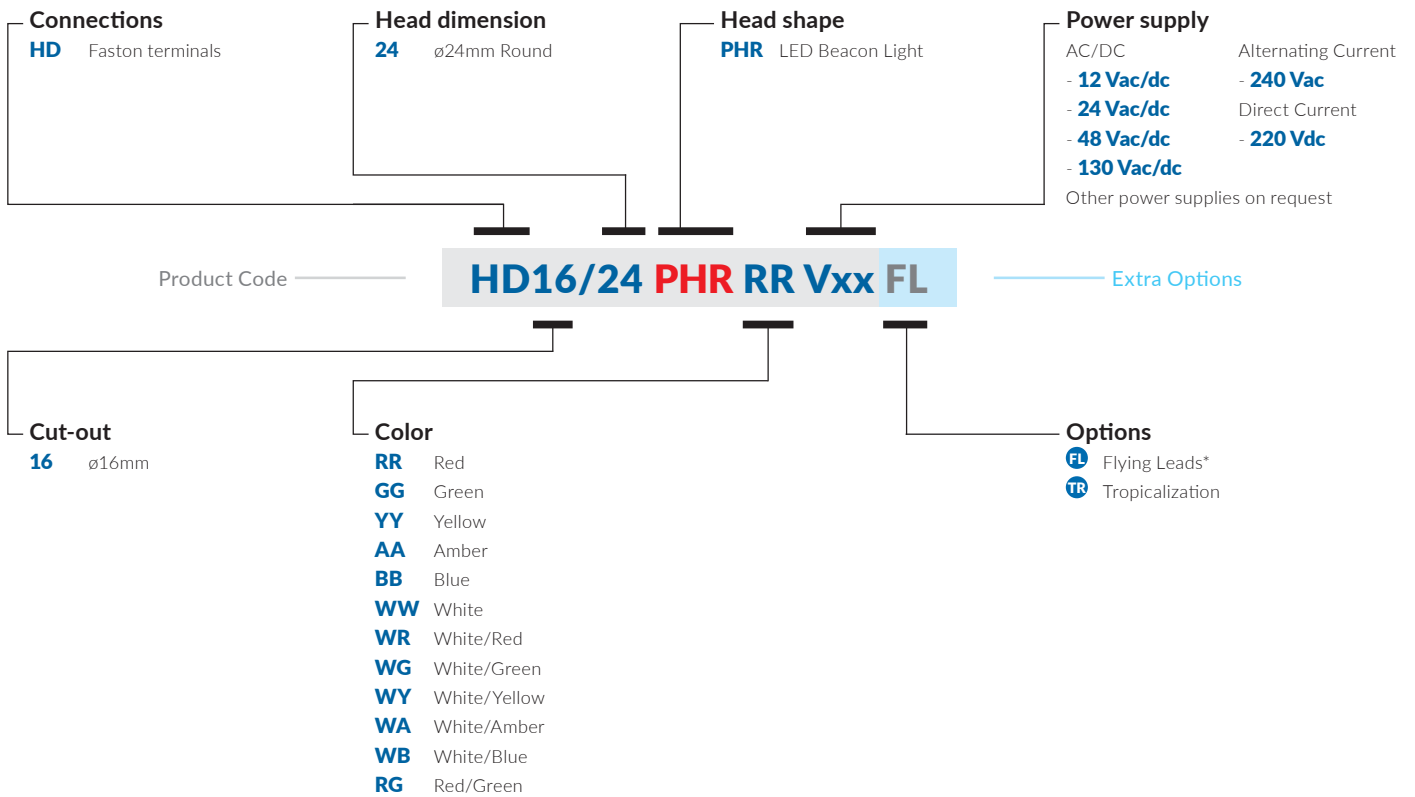
EN 60947.5.1 / EN 60073 / EN 60529 / EN 60068-2-6 / EN 60204.1 / EN ISO 7731 / EN 981 / IEC 536

DOMO reserves the right to change, amend, modify, suspend, continue or terminate all or any part of the Product range either in an individual case or in general, at any time without notice.



Series PHR - \varnothing 16mm

Coding





16/24
 Head Ø24mm
 Cut-out Ø16
 LED diffuser: Ø19mm
 Weight 11g



Colors

LED diffuser	LED
--------------	-----

Standard type

● Red	● Red	HD16/24 PHR RR Vxx
● Green	● Green	HD16/24 PHR GG Vxx
● Yellow	● Yellow	HD16/24 PHR YY Vxx
● Amber	● Amber	HD16/24 PHR AA Vxx
● Blue	● Blue	HD16/24 PHR BB Vxx
○ White	○ White	HD16/24 PHR WW Vxx



○ White	● Red	HD16/24 PHR WR Vxx
○ White	● Green	HD16/24 PHR WG Vxx
○ White	● Yellow	HD16/24 PHR WY Vxx
○ White	● Amber	HD16/24 PHR WA Vxx
○ White	● Blue	HD16/24 PHR WB Vxx



Bicolor LED

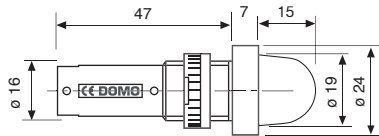
○ White	● Red/Green	HD16/24 PHR RG Vxx
---------	-------------	--------------------



Series PHR - $\varnothing 16\text{mm}$

HD16/24 PHR

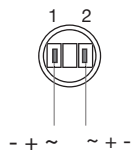
Dimensions mm 1:2



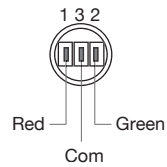
board thickness 10 mm
clamping: threaded nut

Faston terminals Tabs 2,8 x 0,8mm

Monocolor



Bicolor

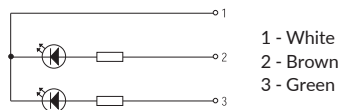


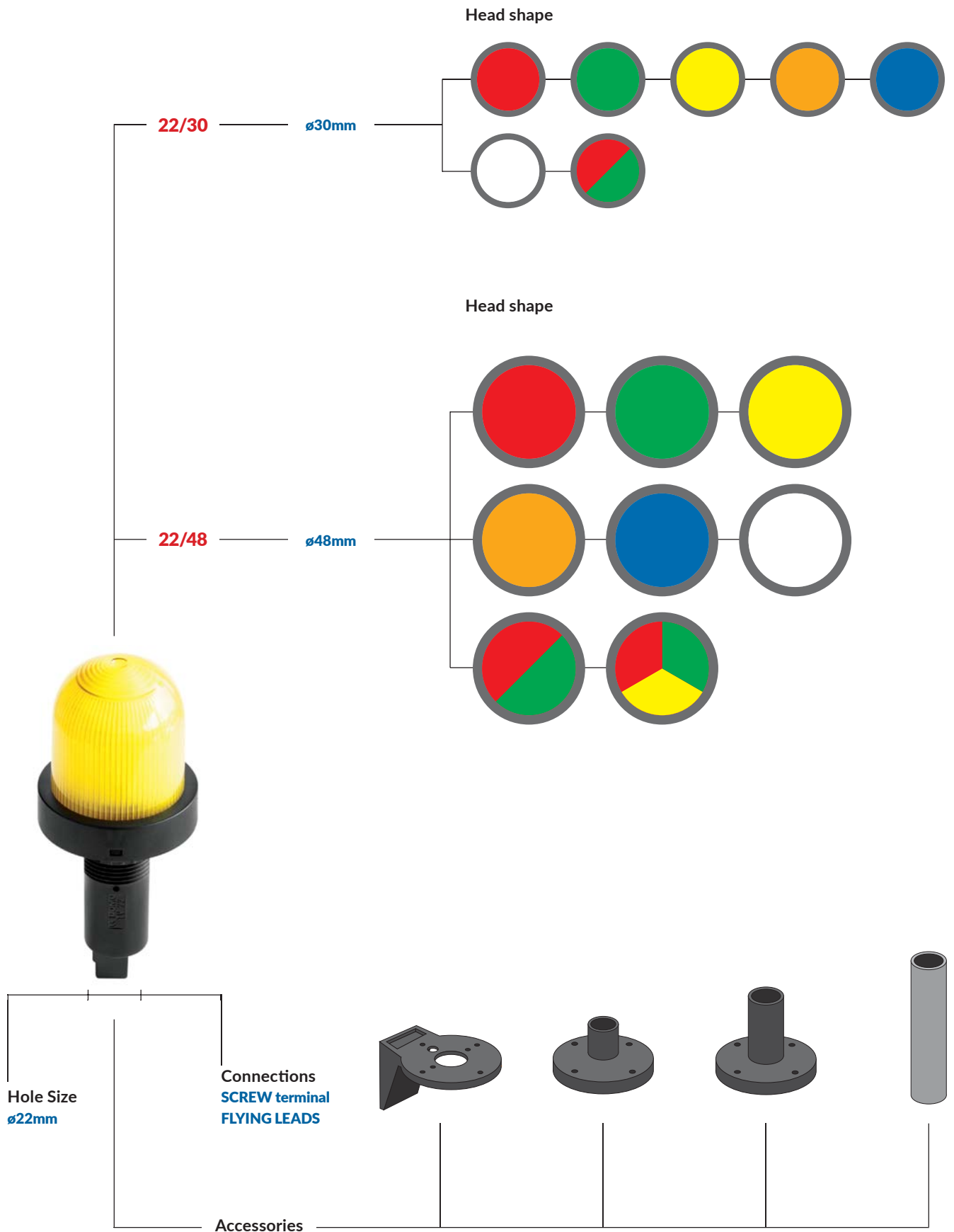
Flying Leads

Monocolor



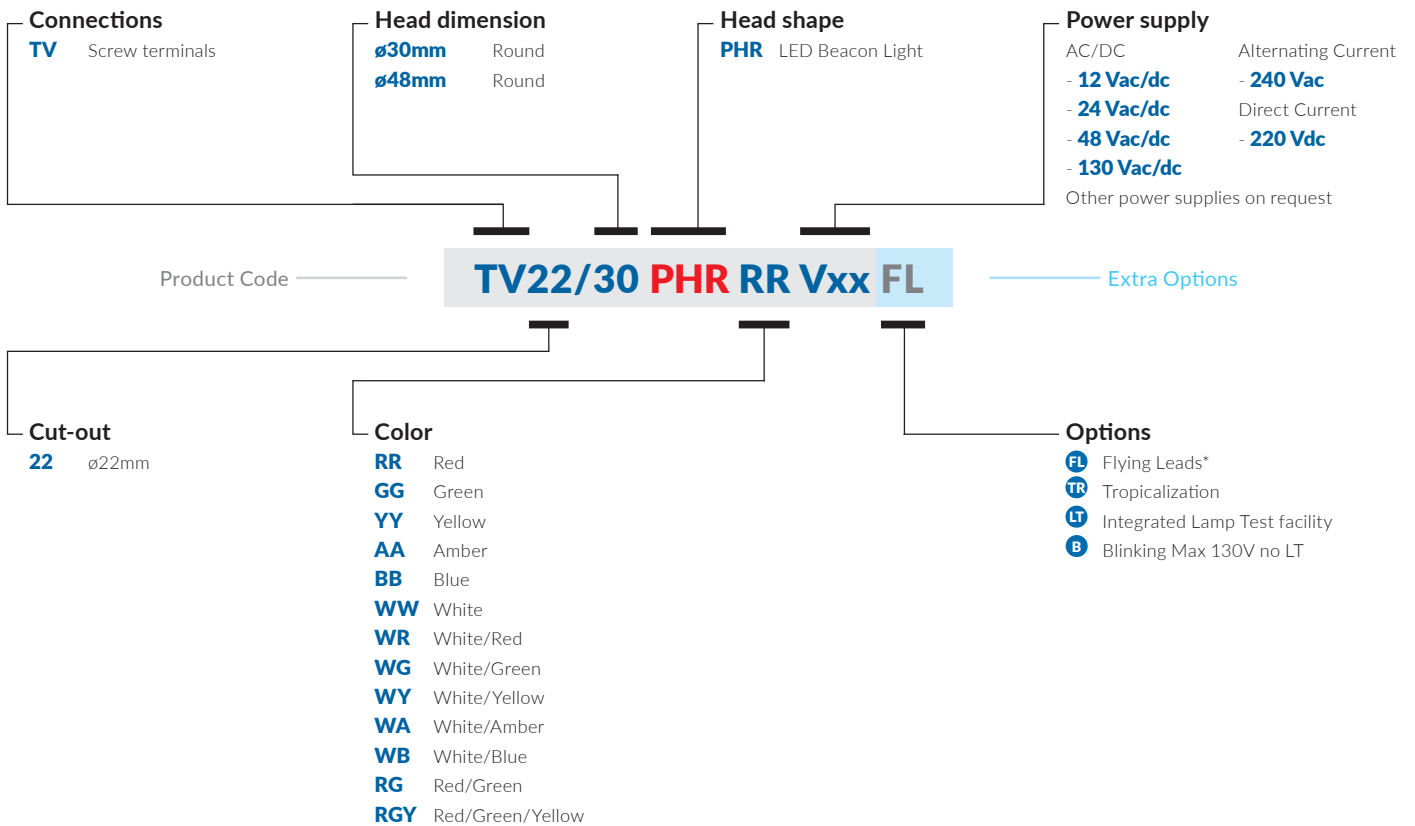
Bicolor





Series PHR - \varnothing 22mm

Coding





Series PHR - ø22mm

Product range

TV22/30
Head Ø30mm
Cut-out Ø22
LED diffuser: Ø23mm
Weight 20g



TV22/48
Head Ø48mm
Cut-out Ø22
LED diffuser: Ø39mm
Weight 41g



Colors

LED diffuser	LED
--------------	-----

Standard type

● Red	● Red	TV22/30 PHR RR Vxx	TV22/48 PHR RR Vxx
● Green	● Green	TV22/30 PHR GG Vxx	TV22/48 PHR GG Vxx
● Yellow	● Yellow	TV22/30 PHR YY Vxx	TV22/48 PHR YY Vxx
● Amber	● Amber	TV22/30 PHR AA Vxx	TV22/48 PHR AA Vxx
● Blue	● Blue	TV22/30 PHR BB Vxx	TV22/48 PHR BB Vxx
○ White	○ White	TV22/30 PHR WW Vxx	TV22/48 PHR WW Vxx
		FL TR LT B Max 130V no LT	FL TR LT B Max 130V no LT No 12V
○ White	● Red	TV22/30 PHR WR Vxx	TV22/48 PHR WR Vxx
○ White	● Green	TV22/30 PHR WG Vxx	TV22/48 PHR WG Vxx
○ White	● Yellow	TV22/30 PHR WY Vxx	TV22/48 PHR WY Vxx
○ White	● Amber	TV22/30 PHR WA Vxx	TV22/48 PHR WA Vxx
○ White	● Blue	TV22/30 PHR WB Vxx	TV22/48 PHR WB Vxx
		FL TR LT B Max 130V no LT	FL TR LT B Max 130V no LT No 12V

Bicolor, Tricolor and Multicolor

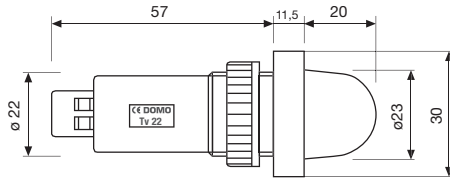
○ White	● Red/Green	TV22/30 PHR RG Vxx	TV22/48 PHR RG Vxx
○ White	● Red/Green/Yellow	-	TV22/48 PHR RGY Vxx
		FL TR	FL TR No 12V

Series PHR - $\varnothing 22\text{mm}$

Dimensions and wiring

TV22/30 PHR

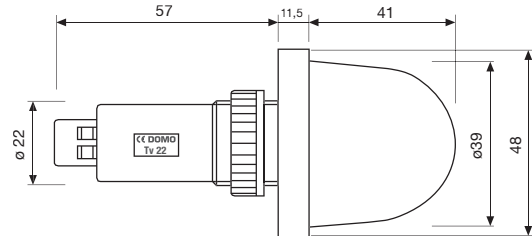
Dimensions mm 1:2



board thickness 10 mm
clamping: threaded nut

TV22/48 PHR

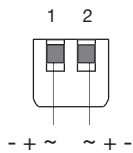
Dimensions mm 1:2



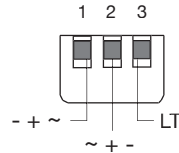
board thickness 10 mm
clamping: threaded nut

Screw terminal 14 AWG - 2,5mmq

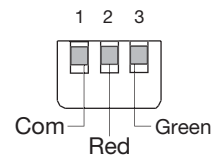
Monocolor



Monocolor + Lamp Test (LT)

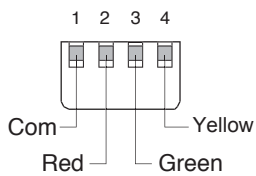


Bicolor



Screw terminal 16 AWG - 0,75 ÷ 1,0mmq

Tricolor

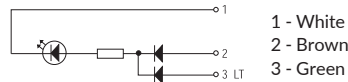


Flying Leads

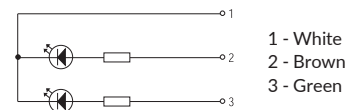
Monocolor



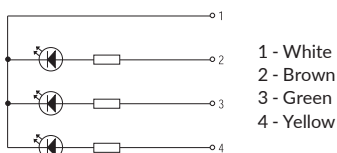
Monocolor + Lamp Test (LT)



Bicolor



Tricolor





Wall mounting bracket for
 • $\varnothing 22\text{mm}$ indicators
 • base for tube
 • base for $\varnothing 22\text{mm}$ indicators
 Weight 19g



ABR 70 1

Base for $\varnothing 26\text{mm}$ tube
 Weight 19g



ABS70 TB

$\varnothing 26\text{mm}$ aluminium tube,
 for $\varnothing 22\text{mm}$ indicators
 Length to be specified

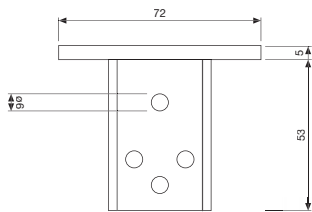
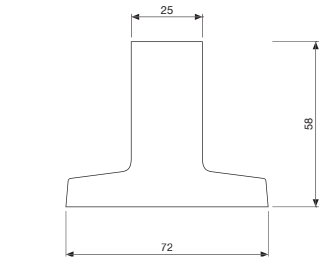
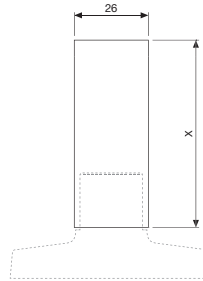
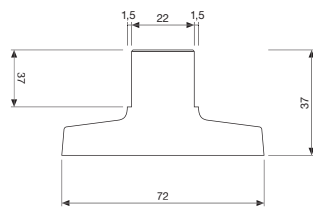
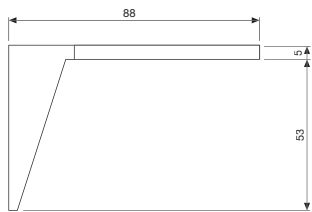
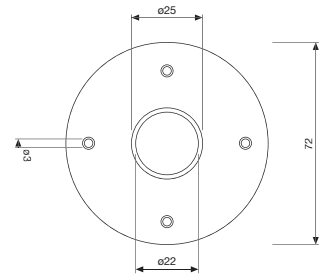
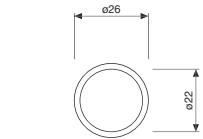
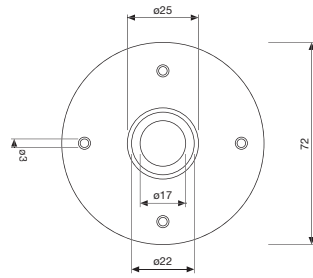
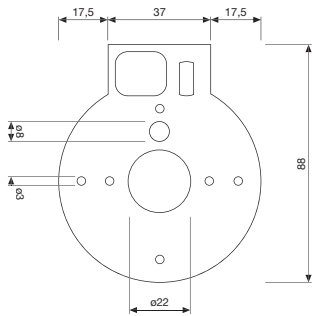


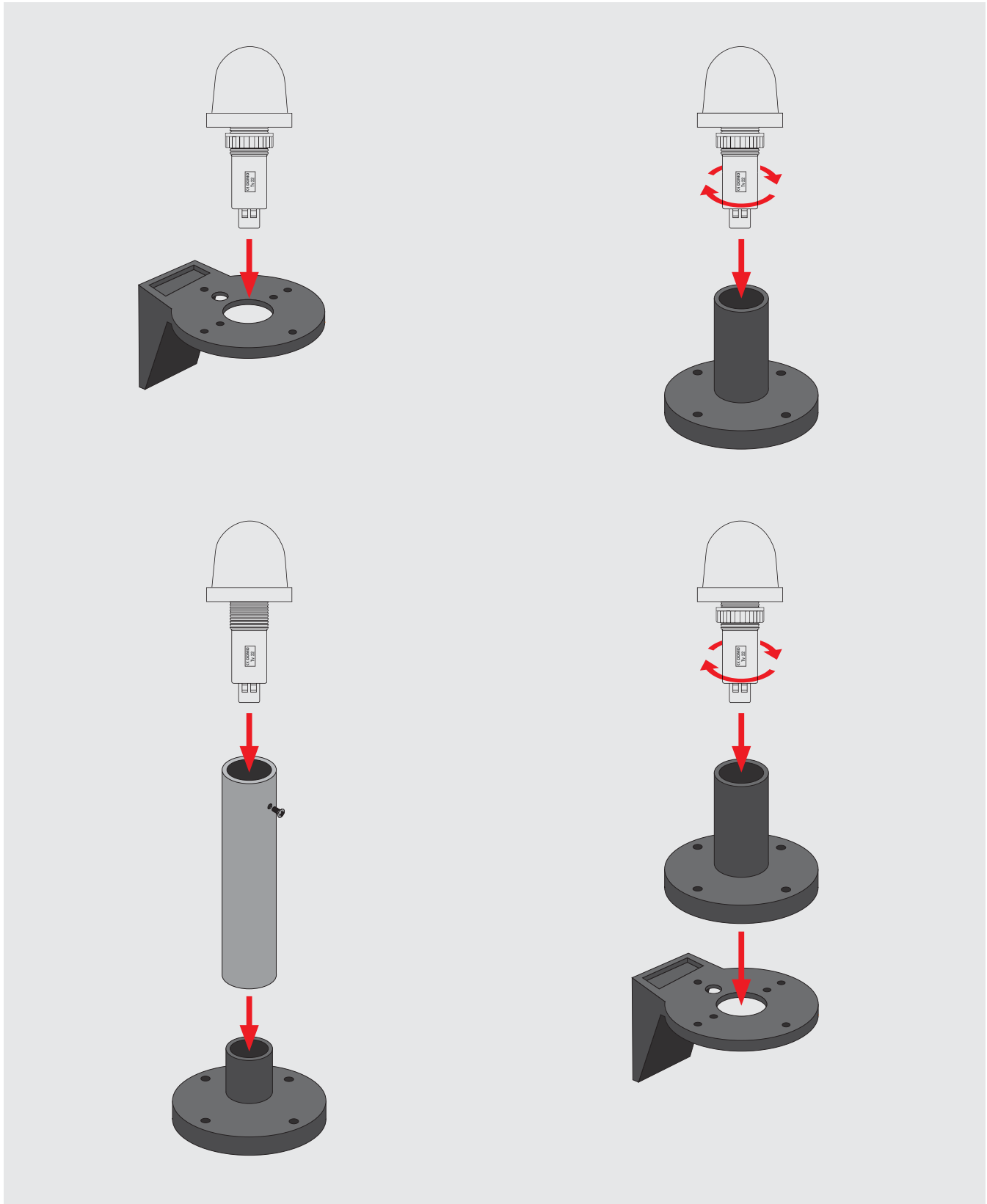
ABS70 TR22 X

Base for $\varnothing 22\text{mm}$ indicators
 Weight 21g



ABS70 22D





Attention! Screw and plastic ring protection included.

Accessories and spare parts Ø16mm

Round label holder
Weight 1g



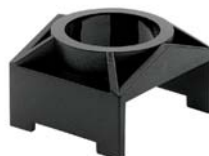
SIM16/24 PTR

Square label holder
Weight 1g



SIM16/24 PTS

Fastener for type B elements
Weight 2g



ASB18
ASB24

**Reducer ring from ø22mm
to ø16mm**
Weight 2g



ARF 22/16

Labels
Weight 4g



SIM16/24 TOW

Protective slides
Weight 4g



SIM16/24 VPK

Tightening wrench
Weight 9g



ACK 22/16

**Contact ring filler for Pushbutton
Switches' central contact**
Weight 1g



CD16 A3 EC

Accessories and spare parts Ø22mm

Round label holder
Weight 2g



SIM22/30 PTR

Square label holder
Weight 2g



SIM22/30 PTS

Fastener for type B elements
Weight 3g



ASB 30

Reducer ring from ø30mm to ø22mm
Weight 2g



ARF 30/22

Labels
Weight 4g



SIM22/30 TOW

Protective slides
Weight 4g



SIM22/30 VPK

Tightening wrench
Weight 9g



ACK 22/16

Lamp extractor
Weight 2g

Compatible with:
BA9s, BA7s, T5.5, T5.5k, MG



AEL BA9s/T5.5

Comparative table



Series	SFT	SLT	CR	PI	ML	VEB	PHR	
	Sferical	Sferical	Semaphore	Position	Multiled	Extrabright	Beacon	
Page	12	12	26	26	50	64	74	
Function								
Indicator	•	•	•	•	•	•	•	
Buzzer								
Pushbutton								
double pushbutton								
illuminated pushbutton								
Emergency mushroom								
Keylock switch								
selector switch								
Emergency for safety								
Design								
Protruding	•	•	•	•	•	•	•	
Flushmounting			•	•				
Round	•	•	•	•	•	•	•	
Square			•	•	•			
Rectangular								
Front protection (internal test)								
IP40					•			
IP54	•	•	•	•	•		•	
IP65					•	•		
IP67								
Contact rating								
10A								
5A								
Mounting Cut-out								
Ø8								
Ø12								
Ø16	•		•	•		•	•	
Ø22	•	•	•	•	•	•	•	
Terminal								
Faston 2,8x0,8	•	•	•	•	•	•	•	
Faston 2,8x0,5								
Screw	•	•	•	•	•	•	•	
Push-in (future)	F	F	F	F	F	F	F	
BA9s, Ba7s, E10, MG, BA15d, BA15s, E14								
Marking								
Paint, Engraving, Film insert				•	•			
Option								
Lamp Test (LT)	•	•	•	•	•			
Inbuilt Diode to avoid reverse feeding (PD)	•	•	•	•	•			
Tropicalization (TR)	•	•	•	•	•	•	•	
Double input + double lamp test (2C+2LT)			•					
Low voltage glow protection (LVGP)	F	F	F	F	F	F	F	
RGB color		•						
Compatible for DOMO Mosaic Mimic								
Protruding	•	•	•	•	•	•	•	
Flushmounting			•	•	•			

F = Future

